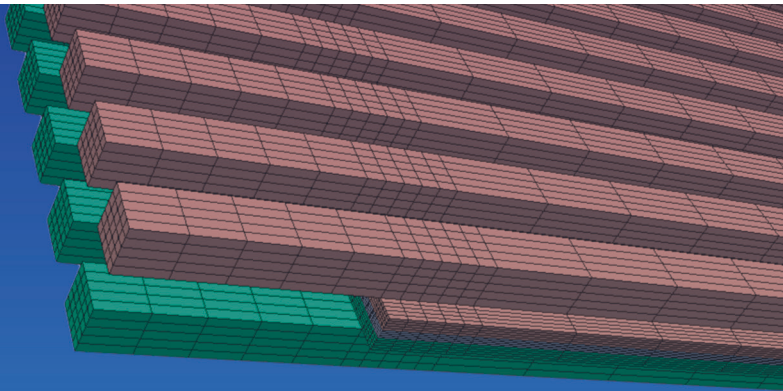
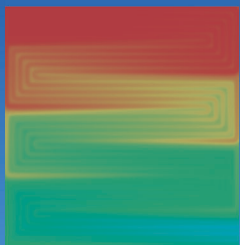
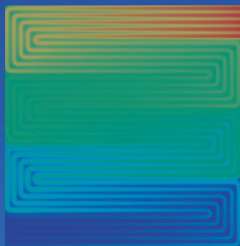


Modelling of High Temperature Polymer Electrolyte Fuel Cells

Qing Cao



Forschungszentrum Jülich GmbH
Institute of Energy and Climate Research
Electrochemical Process Engineering (IEK-3)

Modelling of High Temperature Polymer Electrolyte Fuel Cells

Qing Cao

Schriften des Forschungszentrums Jülich
Reihe Energie & Umwelt / Energy & Environment

Band / Volume 389

ISSN 1866-1793

ISBN 978-3-95806-263-4

Contents

1	Introduction	9
1.1	Motivations and objectives	9
1.2	Organization of this thesis	12
1.3	Working principle and components of the HT-PEFC	13
1.4	Thermodynamic and polarization curve	17
1.5	Classification of the flow of an HT-PEFC	20
1.6	Literature review	23
1.6.1	Modelling work	23
2	Modelling aspects	29
2.1	Assumptions and computational domain	30
2.1.1	Assumptions	30
2.1.2	Computational domain and operating conditions	31
2.2	Basic model (model I)	35
2.3	Macro-homogeneous model (model II)	44
2.4	Water transfer model (model III)	50
2.5	Multicomponent diffusion model using Maxwell-Stefan equations (model IV)	57
2.6	Discretization methods	61
3	Numerical results	65
3.1	Mesh independence study	65
3.2	Simulations with the single channel pair	68
3.2.1	Basic model (model I)	68
3.2.2	Compression effect of GDL (model I)	87
3.2.3	Multicomponent diffusion model (model IV)	97
3.3	Simulations with the single cell with serpentine flow field	107
3.3.1	Basic model (model I) and Macro-homogeneous model (model II)	107
3.3.2	Water transfer model (model III)	116
4	Discussion	125

5 Conclusion	129
6 Appendix	131
6.1 Experimental data for the parameter fitting of Model I and II	131
6.2 Experimental data for the parameter fitting of Model III	132
6.3 Derivation of the matrix form of Maxwell-Stefan relationship	134
6.3.1 Basic equations	134
6.3.2 Molar-based matrix form of Maxwell-Stefan relationship	136
6.3.3 Mass-based matrix form of Maxwell-Stefan relationship with respect of gradient of molar fraction	138
6.3.4 Relationship between gradient of mass fraction and gradient of molar fraction	140
6.3.5 Mass-based matrix form of Maxwell-Stefan relationship with respect of gradient of mass fraction	141
References	143
Acknowledgments	173

**Energie & Umwelt /
Energy & Environment
Band / Volume 389
ISBN 978-3-95806-263-4**

