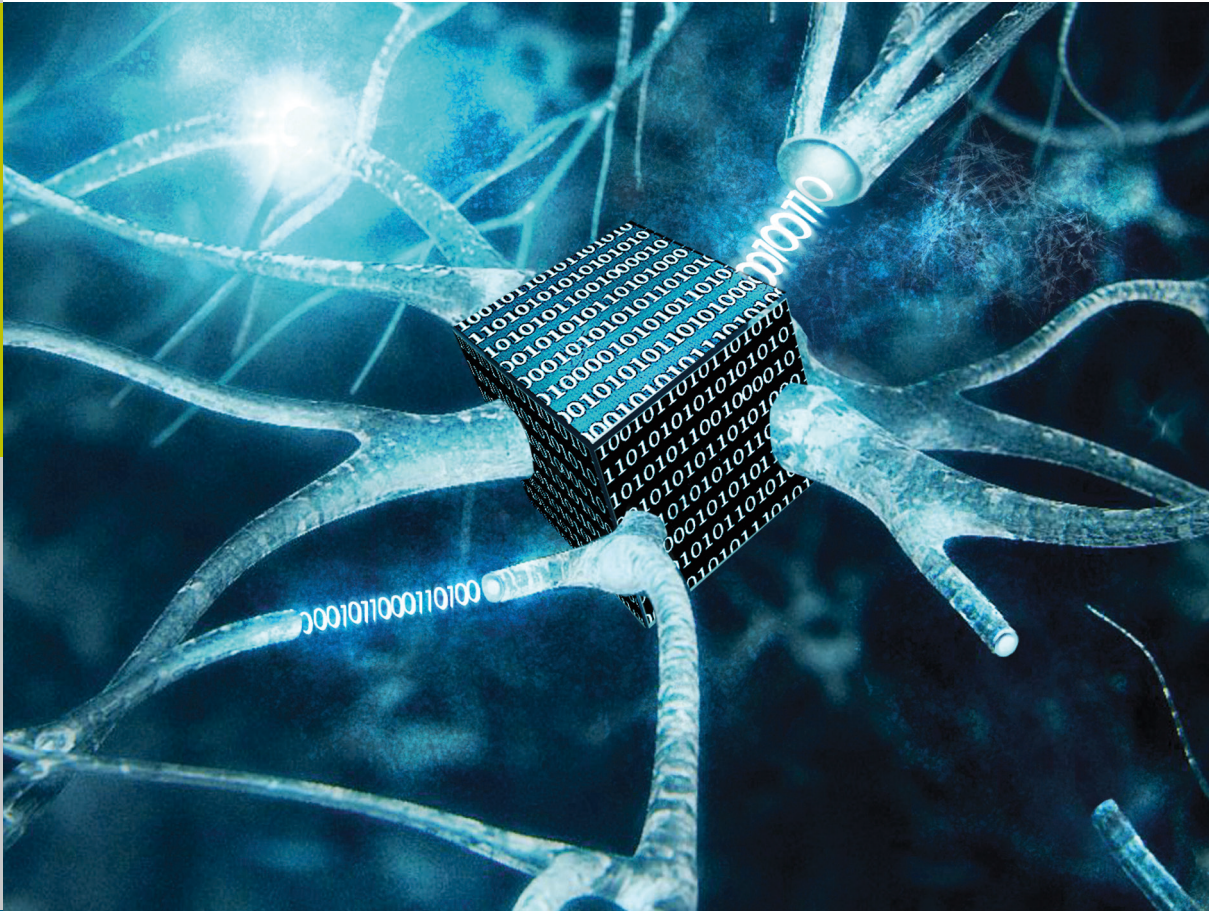


Statistical analysis tools for assessing the functional relevance of higher-order correlations in massively parallel spike trains

Vahid Rostami



Schlüsseltechnologien /
Key Technologies
Band/ Volume 152
ISBN978-3-95806-251-1

Forschungszentrum Jülich GmbH
Institute of Neuroscience and Medicine
Computational and Systems Neuroscience (INM-6 / IAS-6)

Statistical analysis tools for assessing the functional relevance of higher-order correlations in massively parallel spike trains

Vahid Rostami

Schriften des Forschungszentrums Jülich
Reihe Schlüsseltechnologien / Key Technologies

Band / Volume 152

ISSN 1866-1807

ISBN 978-3-95806-251-1

Contents

Abstract	iii
Zusammenfassung	v
I Introduction	1
1 Fundamentals and focus of study	3
1.1 Neuronal response and synapse	4
1.2 Theories of neuronal code	5
1.2.1 Local and distributed coding, binding problem	6
1.2.2 Temporal coding and rate coding	7
1.3 Correlations & behavior	9
1.3.1 Forms of correlations: signal correlation, noise correlation, synchrony	10
1.4 Principled statistical models: towards higher order correlations (HOC) . . .	11
1.4.1 Signature of assemblies: time-locked synchrony to behavior	12
1.4.2 Synchrony and information-theoretic perspective	13
1.5 Advances in experimental recordings: needs for advanced statistical tools .	14
1.6 Aim and overview of the thesis	17
II Results	21
2 Baseline and functional correlations	23
2.1 Introduction	24
2.2 Replication of Riehle et al (1997) by an open source implementation of the Unitary Events method	25
2.2.1 UE analysis and Python implementation	26
2.2.2 Reproducing the results of Riehle et al (1997)	30
2.3 Population statistics uncovers baseline correlation in the cerebral cortex . .	38
2.4 Flaw of UE or feature of the data?	39
2.4.1 Test on independent and correlated Poisson data	39
2.4.2 Analysis of experimental data based on surrogate data	42
2.5 Prediction from random balanced network	43

2.6	Summary	45
3	Inhibited maximum entropy (IME) model	47
3.1	Introduction	48
3.2	Methods	50
3.2.1	Pairwise maximum-entropy model	50
3.2.2	Reduced maximum-entropy model	53
3.2.3	Glauber dynamics	55
3.3	Results	55
3.3.1	The problem: bimodality, bistability, non-ergodicity	55
3.3.2	Intuitive understanding of the bimodality: Glauber dynamics and mean-field picture	61
3.3.3	Bistability ranges and population size	63
3.3.4	Relevance of the bimodality problem for massively parallel data	64
3.3.5	Eliminating the bimodality: an inhibited maximum-entropy model and Glauber dynamics	65
3.3.6	Importance of inhibition in neural networks: modified Glauber dynamics	67
3.3.7	Inhibited maximum-entropy (IME) model	68
3.4	Summary	73
4	Population unitary events (PUE) analysis	75
4.1	Introduction	76
4.2	Methods	76
4.3	Results	79
4.3.1	Example application of the method to synthetic data	79
4.3.2	Calibration of the method	81
4.3.3	Changing perspective: how to approach unknown data	87
4.3.4	Impact of non-homogeneous firing rates and pairwise correlations across neurons	97
4.3.5	Application to experimental data	99
4.4	Summary	103
III	Discussion	105
IV	Appendices	121
5	Supplementary materials	123
5.1	Appendix to Chapter 2 “Baseline and functional correlations”	124

5.1.1	Compound Poisson Process (CPP)	124
5.2	Appendix to Chapter 3 “Inhibited maximum entropy (IME) model”	125
5.2.1	Definition of Glauber dynamics	125
5.2.2	Inhibited Glauber dynamics and its stationary maximum-entropy distribution	125
5.2.3	Simulation of Glauber dynamics with NEST	128
5.2.4	Inferences from a network to a subnetwork and vice versa	129
5.2.5	Maximum-entropy model in probability calculus and analogy with statistical mechanics	141
5.3	Appendix to Chapter 4 “Population unitary events (PUE) analysis”	142
5.3.1	Analytical derivation of $f_A^0(\xi)$ and λ_{cp}^0	142
	Basic Notation	143
	Acknowledgments	145
	References	148

**Schlüsseltechnologien /
Key Technologies
Band / Volume 152
ISBN 978-3-95806-251-1**

