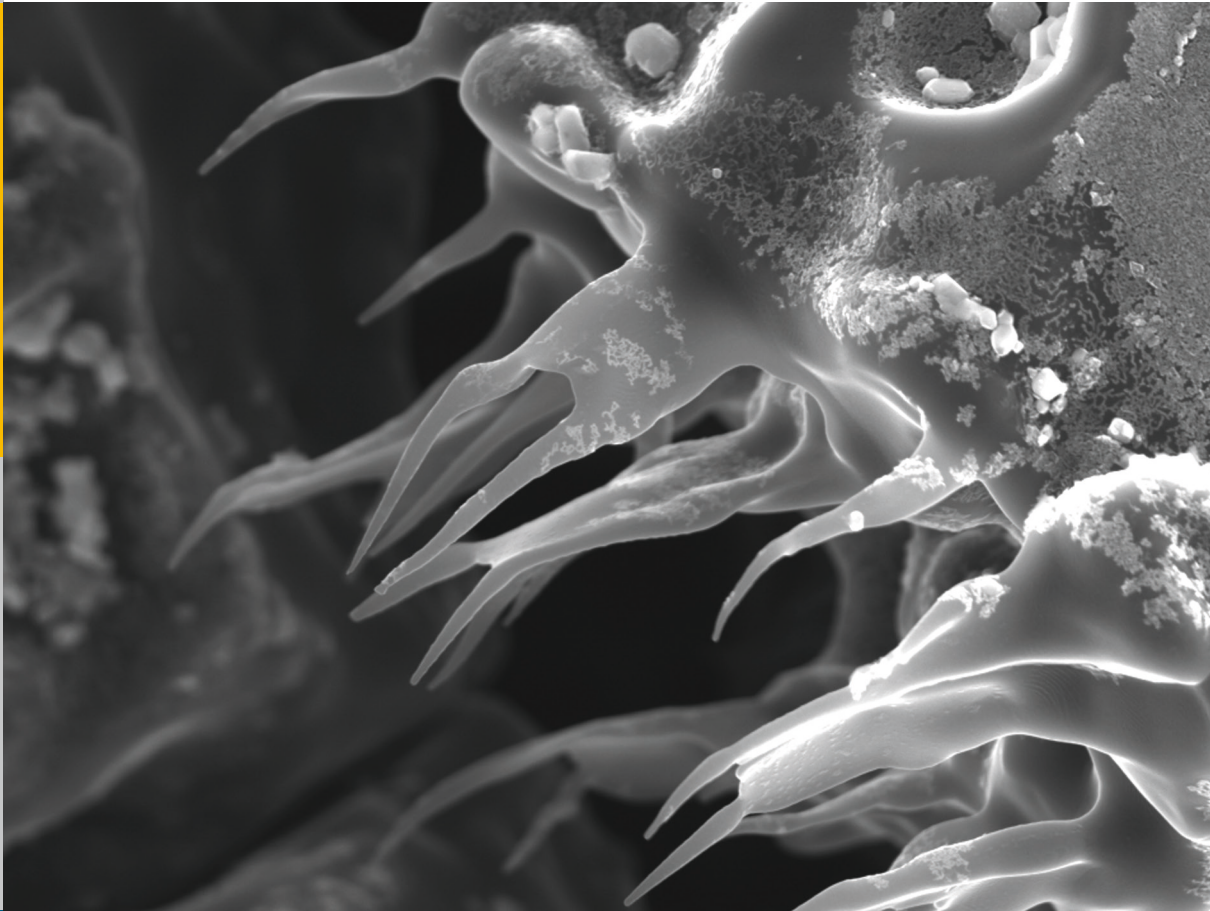


The Impact of Transient Thermal Loads on Beryllium as Plasma Facing Material

Benjamin Spilker



Member of the Helmholtz Association

Energie & Umwelt /
Energy & Environment
Band / Volume 371
ISBN 978-3-95806-227-6

 **JÜLICH**
FORSCHUNGSZENTRUM

Forschungszentrum Jülich GmbH
Institute of Energy and Climate Research (IEK)
Microstructure and Properties of Materials (IEK-2)

The Impact of Transient Thermal Loads on Beryllium as Plasma Facing Material

Benjamin Spilker

Schriften des Forschungszentrums Jülich
Reihe Energie & Umwelt / Energy & Environment

Band / Volume 371

ISSN 1866-1793

ISBN 978-3-95806-227-6

Contents

1	Introduction and background	1
1.1	Nuclear fusion	1
1.2	Fusion reactor concepts	3
1.2.1	Tokamak	4
1.2.2	Stellarator	6
1.3	Plasma wall interaction	7
1.4	Plasma facing components and materials	8
1.5	Fusion plasma induced material damages	11
1.6	ITER	13
1.6.1	First wall and expected loading conditions	15
1.7	Scope of work	19
2	Beryllium as plasma facing material	21
2.1	Physical properties	21
2.2	Oxidation behaviour	22
2.3	Production route	23
2.4	Qualification for ITER	24
3	Experimental, examination, and simulation methods	29
3.1	The electron beam facilities JUDITH 1 & JUDITH 2	29
3.1.1	JUDITH 1	29
3.1.2	JUDITH 2	32
3.2	Post mortem examination methods	33
3.2.1	Laser profilometry	33
3.2.2	Scanning electron microscopy	33
3.2.3	Energy dispersive X-ray spectroscopy	34
3.2.4	Metallographic cross sections	34
3.3	Finite element method (FEM) simulation	34
4	Electron penetration depth FEM simulation analyses	37
4.1	Background	37
4.2	Two step volumetric load model approach	38
4.3	Comparison of surface and volumetric heat load	39
4.4	Validation of the model	40
4.5	Adaption of the model to JUDITH 2	41
4.6	Summary and conclusions	44
5	Transient thermal load performance of beryllium	47

5.1	Transient thermal loads with ELM-like characteristics	47
5.1.1	Experimental set-up	48
5.1.2	Results and discussion	48
5.1.3	Summary and conclusions	57
5.2	Transient thermal loads with MGI-like characteristics	61
5.2.1	Experimental set-up	61
5.2.2	Results and discussion	62
5.2.3	Summary and conclusions	71
5.3	Influence of the surface quality	75
5.3.1	Sample preparation	75
5.3.2	Experimental conditions	76
5.3.3	Results and discussion	76
5.3.4	Summary and conclusions	84
5.4	Transient thermal load induced oxide segregation	87
5.4.1	Transition region formation	87
5.4.2	Beryllium oxide particle formation	90
5.4.3	Summary and conclusions	96
5.5	High pulse number transient thermal loads	99
5.5.1	Fabrication of actively cooled Be-Cu components	99
5.5.2	JUDITH 2 beam adjustment and exposure conditions	101
5.5.3	Results and discussion	102
5.5.4	Summary and conclusions	107
6	Overall conclusions and outlook	109
A	Appendix: Detailed simulation and measurement results	113
A.1	Arithmetic mean roughness results	113
A.2	Equivalent surface heat load simulation results	113
A.3	Crack parameters for different surface qualities	114
B	Appendix: Pre-experiments	117
B.1	Surface finish	117
B.1.1	Sample preparation	117
B.1.2	Experimental conditions	118
B.1.3	Results and discussion	118
B.2	Influence of the number of pulses	121
	Bibliography	123

**Energie & Umwelt /
Energy & Environment
Band / Volume 371
ISBN 978-3-95806-227-6**

