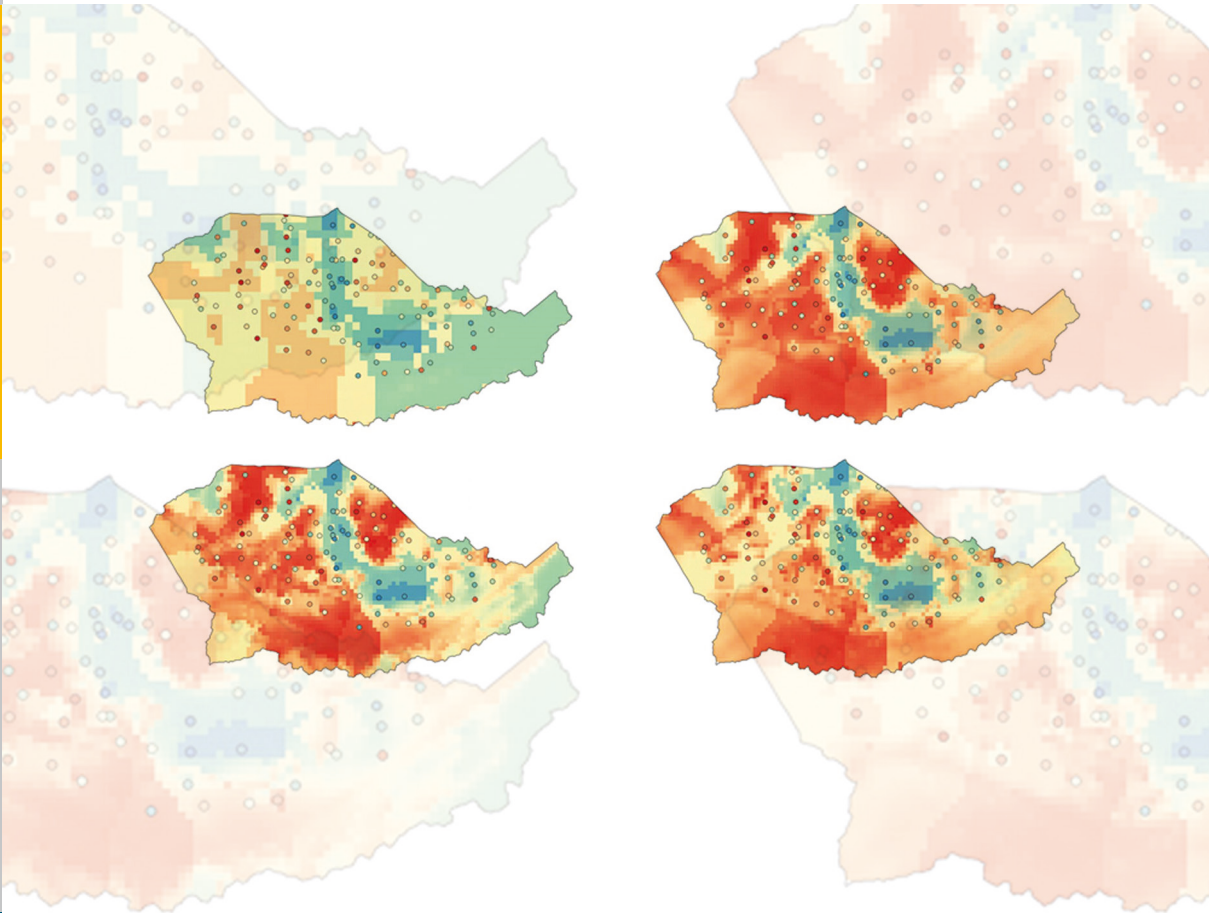


3D hydrological simulation of a forested headwater catchment: Spatio-temporal validation and scale dependent parameterization

Zhufeng Fang



Forschungszentrum Jülich GmbH
Institute of Bio- and Geosciences
Agrosphere (IBG-3)

3D hydrological simulation of a forested headwater catchment: Spatio-temporal validation and scale dependent parameterization

Zhufeng Fang

Schriften des Forschungszentrums Jülich
Reihe Energie & Umwelt / Energy & Environment

Band / Volume 337

ISSN 1866-1793

ISBN 978-3-95806-174-3

Contents

Abstract	I
Kurzzusammenfassung	IV
Contents	VIII
List of Abbreviations and Symbols.....	XI
List of Tables	XIV
List of Figures	XV
1 General Introduction	1
1.1 Background and Motivation.....	1
1.2 Research Objectives	7
1.3 Methodology	8
1.4 Experiments and data	10
1.5 Dissertation Overview.....	11
2 Spatio-temporal validation of long-term 3D hydrological simulations of a forested catchment using empirical orthogonal functions and wavelet coherence analysis	13
2.1 Abstract	14
2.2 Introduction	15
2.3 Materials and methods	18
2.3.1 The experimental test site.....	18
2.3.2 The ParFlow-CLM Simulation Platform.....	20
2.3.3 Model Setup.....	21
2.3.4 Inverse Estimation of Hydraulic Parameters.....	25
2.3.5 Model Scenarios	26
2.3.6 Validation Data.....	28
2.3.7 Empirical Orthogonal Function (EOF) Analysis.....	29

2.3.8 Wavelet Coherence Analysis.....	31
2.4 Results and Discussions	32
2.4.1 Estimation of Hydraulic Parameters.....	32
2.4.2 Representation of the Interflow Process (SC1)	33
2.4.3 Effect of Heterogeneity	34
2.4.4 Water Balance Closing	38
2.4.5 EOF Analysis.....	39
2.4.6 Wavelet Coherence Analysis.....	42
2.5 Conclusions	48
3 Scale dependent parameterization of soil hydraulic conductivity in 3D simulation of hydrological processes in a forested headwater catchment	51
3.1 Abstract	52
3.2 Introduction	53
3.3 The experimental setup	54
3.3.1 The experimental test site Wüstebach	55
3.3.2 Hydrology data collections	56
3.4 Model and methods	57
3.4.1 The ParFlow-CLM model	57
3.4.2 Model Setup.....	57
3.4.3 Upscaling of saturated hydraulic conductivity using the entropy concept.....	58
3.4.4 Scenario analysis	62
3.5 Results and discussions	64
3.5.1 Information contents and amplification factors.....	64
3.5.2 Comparison of the model scenarios.....	68
3.5.2.1 Results of model Scenarios 1 and 2	68

3.5.2.2 Results of model Scenarios 3 and 4	70
3.5.3 Comparison of different model resolutions	72
3.6 Conclusions	76
4 Evaluation of 3D model parameterizations using water transit time distributions	78
4.1 Abstract	79
4.2 Introduction	80
4.3 Experimental setup	82
4.3.1 The experimental test site Wüstabach	82
4.3.2 Hydrology data collections	83
4.4 Model and methods	84
4.4.1 The SLIM-FAST model	84
4.4.2 Parflow-CLM and SLIM-FAST model setup	86
4.4.3 Streamwater TTD estimate using TRANSEP	87
4.4.4 Scenario analysis	88
4.5 Results and discussions	89
4.5.1 Comparison of different number of initial particles	89
4.5.2 Effect of dispersion parameters	90
4.5.3 Comparison of upscaling schemes	92
4.6 Conclusions	94
5 Synthesis	96
5.1 Final Conclusions	96
5.2 Outlook	98
Acknowledgements	101
References	103
Publications	119

**Energie & Umwelt /
Energy & Environment
Band / Volume 337
ISBN 978-3-95806-174-3**

