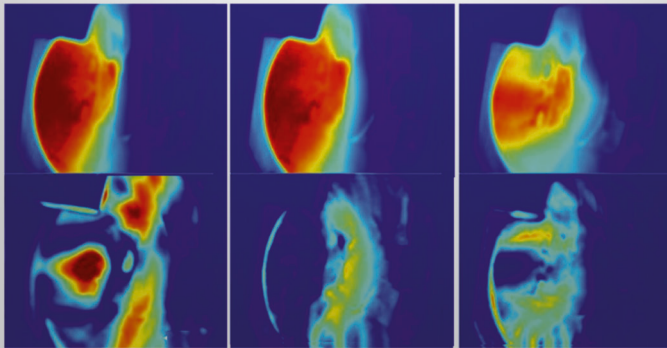
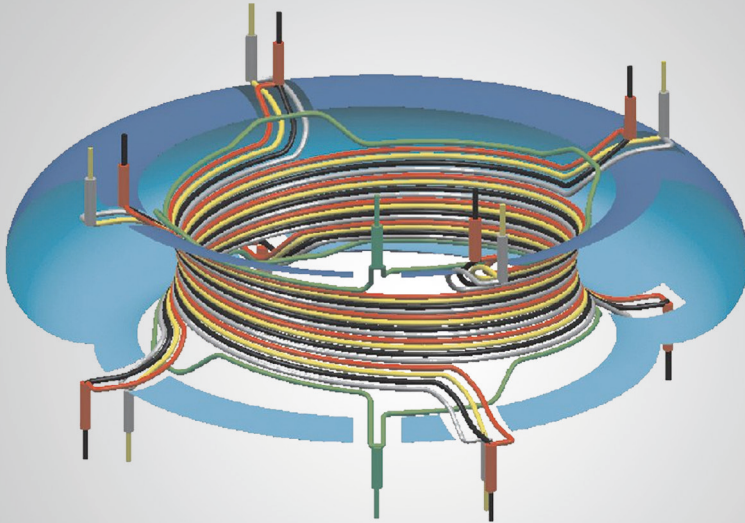


# Theoretical and experimental studies of runaway electrons in the TEXTOR tokamak

S.S. Abdullaev, K.H. Finken, K. Wongrach, O. Willi



Energie & Umwelt /  
Energy & Environment  
Band / Volume 318  
ISBN 978-3-95806-140-8

Forschungszentrum Jülich GmbH  
Institute of Energy and Climate Research  
Plasma Physics IEK-4

# Theoretical and experimental studies of runaway electrons in the TEXTOR tokamak

S.S. Abdullaev, K.H. Finken, K. Wongrach, O. Willi

Schriften des Forschungszentrums Jülich  
Reihe Energie & Umwelt / Energy & Environment

Band / Volume 318

---

ISSN 1866-1793

ISBN 978-3-95806-140-8

# Contents

<b>1</b>	<b>Introduction</b> .....	1
<b>2</b>	<b>Generation of REs in tokamaks</b> .....	5
2.1	Primary generation mechanism .....	5
2.2	Hot tail generation .....	6
2.3	Runaway avalanche .....	7
2.4	Other possible primary RE sources .....	8
<b>3</b>	<b>Runaway electrons in equilibrium plasmas</b> .....	9
3.1	Equations of guiding-center motion .....	9
3.2	Action-angle variables .....	10
3.3	Runaway electron orbits .....	12
3.4	Outward drift of electron orbits induced by the toroidal electric field .....	15
<b>4</b>	<b>Transport of REs in a stochastic magnetic field</b> .....	19
4.1	Equations of motion in the presence of perturbations .....	19
4.2	Resonance interactions and onset of chaotic motion .....	21
4.3	Onset of chaotic motion and the rate of diffusion .....	21
4.4	Asymptotic behavior of spectrum amplitudes $K_{mnp}$ .....	23
4.5	Transport of REs due to magnetic turbulence .....	25
4.5.1	Fractional diffusion .....	26
4.5.2	Historical remarks .....	27
4.6	Transport of REs induced by large-scale magnetic field perturbations .....	27
4.6.1	Losses of REs caused by DED field perturbations in steady-state plasmas .....	28
4.6.2	Effect of MHD mode and DED field perturbations on REs in post-disruption plasmas .....	32
<b>5</b>	<b>Diagnostic techniques of runaway electrons</b> .....	37
5.1	Synchrotron radiation .....	37
5.2	Scintillator probes .....	39
5.3	Heat load probes of REs .....	41
5.4	Calorimeter probe of REs .....	42

<b>6</b>	<b>Runaway electrons in low-density discharges</b> .....	45
6.1	Previous experiments on TEXTOR .....	45
6.2	Energy spectrum of REs .....	46
6.3	Diffusion coefficients at different $B_t$ and magnetic turbulence level .....	47
6.4	Losses of REs due to magnetic perturbations of the TEXTOR-DED .....	48
<b>7</b>	<b>Runaway electrons during plasma disruptions</b> .....	55
7.1	Calorimetric measurements .....	56
7.2	Runaway electrons at the plasma edge .....	57
7.3	Runaway electrons at the plasma core .....	60
7.4	Mitigation of runaway electrons .....	63
7.4.1	Massive gas injection (MGI) .....	63
7.4.2	Effect of resonant magnetic perturbations .....	66
<b>8</b>	<b>Mechanism of RE beam formation during disruptions</b> ....	69
8.1	Main conjectures .....	69
8.1.1	Generic structures of magnetic field during plasma disruption .....	70
8.1.2	Disruptions of plasmas with reversed magnetic shear ..	71
8.2	Experimental evidences .....	72
8.2.1	Existence of the finite interval of the initial RE currents $I_{RE}^{(0)}$ .....	73
8.2.2	Dependence on the level of magnetic perturbations ...	74
8.3	Estimations of thermal quench and current quench times ....	75
8.4	RE beam evolution .....	76
<b>9</b>	<b>Summary</b> .....	79
<b>A</b>	<b>Models of equilibrium magnetic field</b> .....	83
<b>B</b>	<b>Models of magnetic perturbations</b> .....	87
B.1	Model of MHD modes .....	87
B.2	Model of the DED magnetic perturbations .....	89
<b>C</b>	<b>Generic structures of a stochastic magnetic field during plasma disruptions</b> .....	93
<b>D</b>	<b>Collisional heat and particle transport in a stochastic magnetic field</b> .....	97
	<b>References</b> .....	101

**Energie & Umwelt /  
Energy & Environment  
Band / Volume 318  
ISBN 978-3-95806-140-8**

