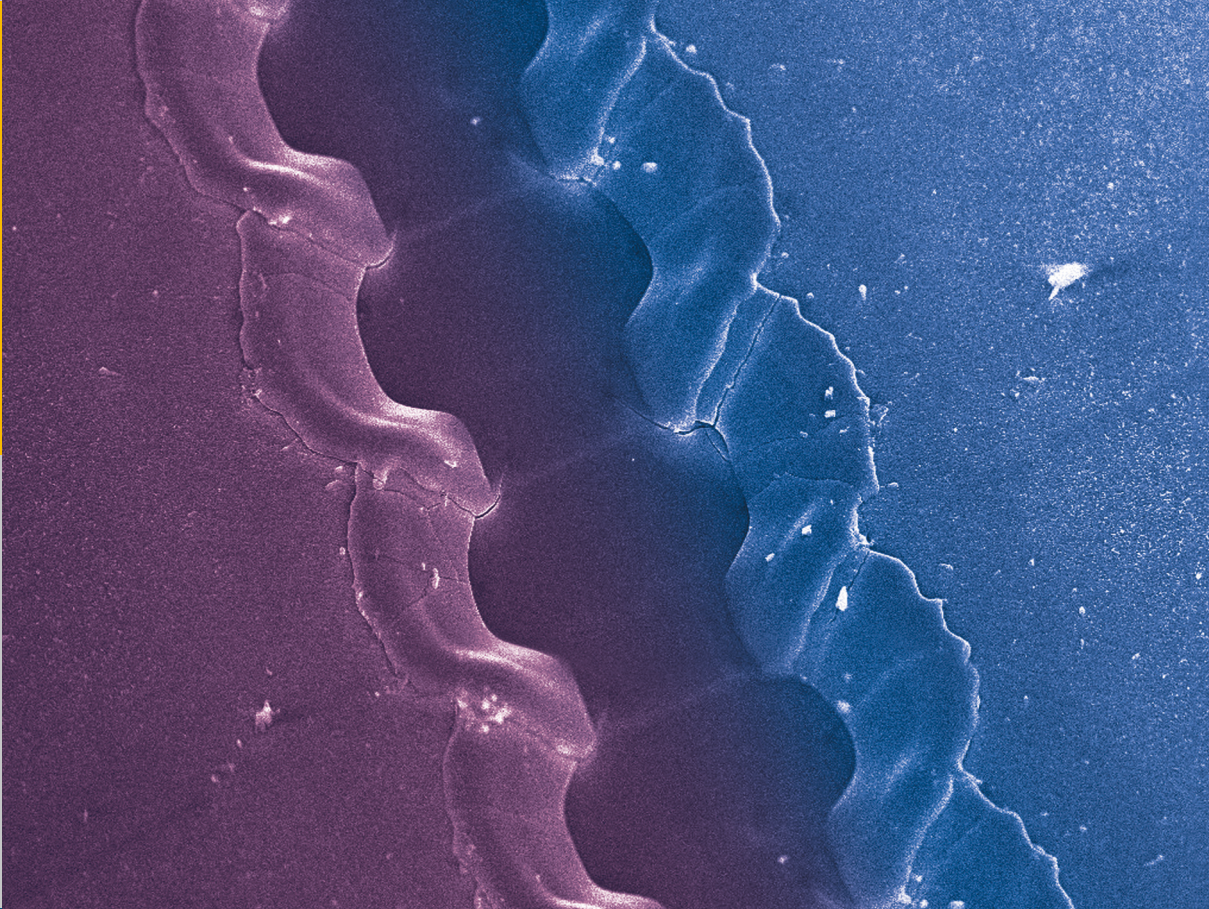


# Laser processing for the integrated series connection of thin-film silicon solar cells

Bugra Turan



Energie & Umwelt /  
Energy & Environment  
Band / Volume 306  
ISBN 978-3-95806-119-4

Forschungszentrum Jülich GmbH  
Institute of Energy and Climate Research (IEK)  
Photovoltaics (IEK-5)

# **Laser processing for the integrated series connection of thin-film silicon solar cells**

Bugra Turan

Schriften des Forschungszentrums Jülich  
Reihe Energie & Umwelt / Energy & Environment

Band / Volume 306

---

ISSN 1866-1793

ISBN 978-3-95806-119-4



# Contents

<b>Abstract</b>	<b>v</b>
<b>Kurzfassung</b>	<b>vii</b>
<b>1 Introduction</b>	<b>1</b>
<b>2 Fundamentals</b>	<b>5</b>
2.1 Solar cells . . . . .	5
2.1.1 The electrical solar cell properties . . . . .	8
2.2 The monolithic series connection . . . . .	14
2.2.1 Realization of the interconnection . . . . .	15
2.2.2 Modeling of interconnection losses . . . . .	17
<b>3 Laser material processing</b>	<b>23</b>
3.1 Laser sources . . . . .	23
3.2 Optic basics . . . . .	26
3.3 Laser structuring system . . . . .	30
3.3.1 Laser processing parameters . . . . .	31
3.3.2 Material laser ablation properties . . . . .	33
3.3.3 Determination of the processing beam spot size . . . . .	35
<b>4 Characterization methods</b>	<b>39</b>
4.1 Ablation mechanisms . . . . .	39
4.2 Conductivity Atomic Force Microscopy . . . . .	41
4.3 Laser Beam Induced Current . . . . .	44
<b>5 Front-contact structuring process P1</b>	<b>47</b>
5.1 Material ablation behavior . . . . .	47
5.2 Mechanisms driving laser ablation processes . . . . .	50
5.3 Geometrical scribe width optimization . . . . .	58
5.4 Near scribe edge material modifications . . . . .	62
5.4.1 Post-scribe cleaning . . . . .	73
5.5 Impact on electrical properties . . . . .	78
5.6 Process implementation in solar mini modules . . . . .	84
	xi

## Contents

---

<b>6 Absorber removal process P2</b>	<b>87</b>
6.1 Material ablation behavior . . . . .	87
6.1.1 Visually optimized scribe lines . . . . .	91
6.2 Absorber ablation mechanisms . . . . .	93
6.3 Modeling of removal mechanisms . . . . .	96
6.3.1 Temporal and spatial temperature distribution . . . . .	96
6.3.2 Vapor-Stress induced ablation mechanisms . . . . .	109
6.3.3 Thermal-Stress induced ablation . . . . .	115
6.4 Impact on electrical properties . . . . .	117
6.4.1 Ablation debris redeposition . . . . .	122
6.4.2 Atmospheric conditions . . . . .	125
6.4.3 Series resistance solar module losses . . . . .	127
6.5 Process implementation in mini solar modules . . . . .	130
<b>7 Back-contact insulation process P3</b>	<b>135</b>
7.1 Material ablation behavior . . . . .	135
7.1.1 Geometrical scribe width minimization . . . . .	139
7.2 Impact on electrical properties . . . . .	140
7.2.1 Sub-threshold energy intake for Gaussian laser beams . . . . .	142
7.2.2 Shunting behavior of P3 processed solar cells . . . . .	146
7.3 Near scribe edge material modifications . . . . .	156
7.4 Process implementation in mini solar modules . . . . .	162
<b>8 Conclusion</b>	<b>165</b>
<b>Bibliography</b>	<b>171</b>
<b>Publications</b>	<b>185</b>
<b>Acknowledgements</b>	<b>187</b>

**Energie & Umwelt /  
Energy & Environment  
Band / Volume 306  
ISBN 978-3-95806-119-4**

