

Validation and characterisation of novel cellular ligands of membrane-associated HIV-1 Nef

Ellen Clare Kammula

Forschungszentrum Jülich GmbH
Institute of Complex Systems (ICS)
Strukturbiochemie (ICS-6)

Validation and characterisation of novel cellular ligands of membrane-associated HIV-1 Nef

Ellen Clare Kammula

Schriften des Forschungszentrums Jülich
Reihe Gesundheit / Health

Band / Volume 59

ISSN 1866-1785

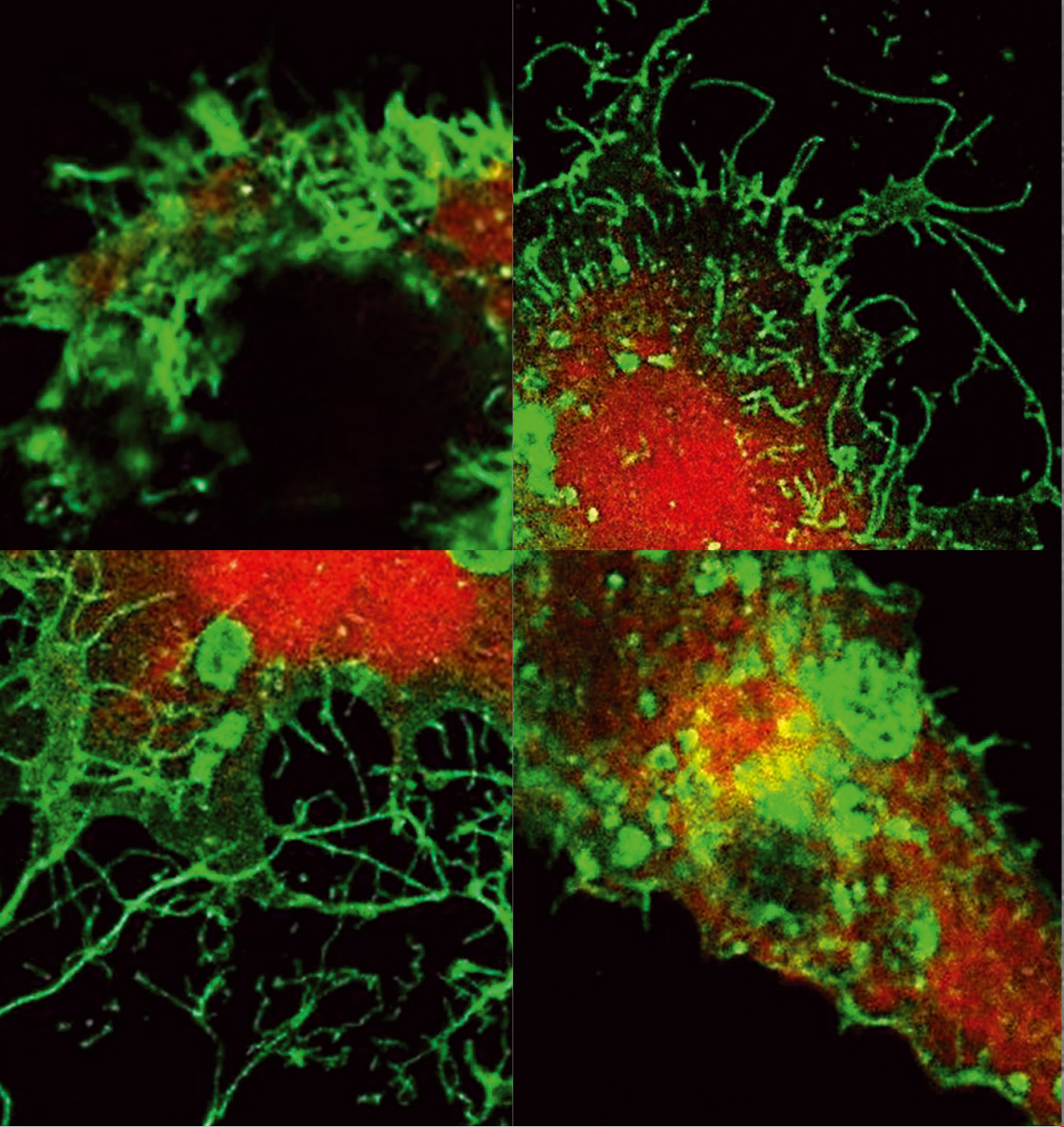
ISBN 978-3-89336-839-6

Table of contents

<u>1</u>	<u>INTRODUCTION</u>	9
1.1	HUMAN IMMUNODEFICIENCY VIRUS HIV-1	9
1.1.1	PATHOLOGY OF AIDS	9
1.1.2	NEUROPATHOLOGIES ASSOCIATED WITH HIV	10
1.1.3	VIRAL GENOME AND STRUCTURE OF HIV-1	10
1.2	HIV-NEF: A DECISIVE FACTOR FOR VIRAL SPREAD AND PERSISTENCE	12
1.2.1	MODULATION OF INTRACELLULAR TRAFFICKING OF HOST CELL PROTEINS BY NEF	14
1.2.2	EXOCYTOSIS AS WAYS OF NEF TO SHUTTLE TO NON-INFECTED CELLS	16
1.3	ROLES OF HIV-1 NEF DURING NEUROAIDS/HAND MANIFESTATION	17
1.4	CELLULAR FUNCTIONS OF SELECTED PUTATIVE NEW CELLULAR NEF INTERACTION PARTNERS PREVIOUSLY IDENTIFIED BY A SPLIT-UBIQUITIN YEAST TWO-HYBRID SCREEN	18
1.5	AIMS	22
<u>2</u>	<u>MATERIAL AND METHODS</u>	23
2.1	MATERIALS	23
2.1.1	ANTIBODIES AND ENZYMES	23
2.1.2	CHEMICALS	24
2.1.3	KITS	25
2.1.4	PLASMIDS AND OLIGONUCLEOTIDES	25
2.1.5	BACTERIAL CELL LINES	27
2.1.6	EUKARYOTIC CELL LINES	27
2.1.7	MEDIA, SOLUTIONS AND BUFFERS	27
2.1.8	MOLECULAR WEIGHT MARKERS	28
2.1.9	LABORATORY EQUIPMENT	29
2.1.10	DATABASE AND SOFTWARE	30
2.2	METHODS	31
2.2.1	DNA TECHNIQUES AND CLONING	31
2.2.2	BACTERIAL CULTURE	34
2.2.3	PROTEIN EXPRESSION AND PURIFICATION	34
2.2.4	CELL CULTURE	37
2.2.5	MICROSCOPIC SETTINGS AND IMAGE ACQUISITION	41
2.2.6	BIOCHEMICAL AND IMMUNOLOGICAL METHODS	42

3	RESULTS	47
3.1	ESSENTIAL PREPARATORY WORK	47
3.1.1	PROTEIN PURIFICATION: YUH AND NEF	47
3.1.2	CHARACTERISATION OF THE EMPLOYED ANTI-HIV-1 NEF SF2 ANTIBODY	49
3.1.3	CONSTRUCTION OF VECTORS FOR THE EXPRESSION OF BAP31, ITGB1, CD320, CLDN10 AND PH4 IN MAMMALIAN CELLS	52
3.1.4	TRANSFECTION AND FIXATION OPTIMISATION IN EUKARYOTIC CELL LINES	55
3.1.5	SUBCELLULAR FRACTIONATION OF EUKARYOTIC CELL LYSATES	59
3.2	ANALYSIS OF THE NEF-BINDING PROPERTIES OF BAP31, ITGB1, TCBLR/CD320, CLDN10, PH4 AND GPM6B	61
3.2.1	PULL-DOWN EXPERIMENTS WITH RECOMBINANT NEF PROTEIN AND ENDOGENOUSLY EXPRESSED PUTATIVE NEF-BINDERS	61
3.2.2	COIMMUNOPRECIPITATION EXPERIMENTS WITH BAP31 AND ITGB1	65
3.2.3	SUBCELLULAR LOCALISATION STUDIES VIA FLUORESCENT CONFOCAL MICROSCOPY	69
4	DISCUSSION	95
4.1	THE QUALITY CONTROL PROTEIN B-CELL RECEPTOR ASSOCIATED PROTEIN 31 (BAP31)	96
4.1.1	ENDOGENOUS BAP31 IN THE ER FRACTIONATION SEEMS TO DECREASE IN THE PRESENCE OF NEF	96
4.1.2	RECOMBINANT NEF WEAKLY BINDS ENDOGENOUS BAP31	97
4.1.3	INDICATIONS FOR AN ASSOCIATION OF NEF WITH BAP31 THROUGH COIP	97
4.1.4	NEF COLOCALISES WITH BAP31 IN THE PERINUCLEAR REGION	99
4.1.5	BAP31 AND THE QUALITY CONTROL	99
4.1.6	NEF RELATION TO BAP31 IN MHC CLASS I LOADING	101
4.1.7	BAP31 AND THE IMMUNOGENIC CELL DEATH	103
4.2	MEDIATOR BETWEEN INTRA AND EXTRACELLULAR MATRIX: INTEGRIN BETA-1 (ITGB1)	105
4.2.1	COIP OF NEF AND ITGB1 IS ONLY POSSIBLE IN PHOSPHORYLATION-ACTIVATED CELLS	106
4.2.2	NEF COLOCALISES STRONGLY WITH THE TWO ITGB1 CONSTRUCTS (EGFP-ITGB1 AND CD8 _{EXTRA} -ITGB1 _{TM-CYTO} -3XFLAG)	107
4.2.3	VESICLE FORMATION AFTER TRANSFECTION WITH NEF AND PDsRED CONSTRUCTS	108
4.2.4	PUTATIVE FATES OF NEF-ITGB1 COMPLEXES IN DIFFERENT TYPES OF VESICLES: ENDO- AND EXOCYTOSIS INFLUENCED BY NEF	109
4.3	TRANSCOBALAMIN RECEPTOR FOR VITAMIN B₁₂ (TCBLR/CD320)	111
4.3.1	TCBLR/CD320 CYTOPLASMIC DOMAIN DISPLAYS A PUTATIVE CD4-LIKE NEF-BINDING MOTIF	111
4.3.2	TCBLR/CD320 DISPLAYS LOW EXPRESSION LEVELS AND IS DIFFICULT TO DETECT IN CELL LYSATES	113
4.3.3	EXPRESSION OF ENDOGENOUS TCBLR/CD320 IS CELL CYCLE DEPENDENT AND SHOWS DIVERSE LOCALISATIONS IN FIXED CELLS	113

4.3.4	COLOCALISATION RESULTS USING A EGFP-CD320 FUSION HAVE TO BE CONSIDERED WITH CARE	114
4.3.5	PUTATIVE CONNECTIONS BETWEEN NEF, VITAMIN B ₁₂ AND NEUROLOGICAL IMPAIRMENTS	115
4.4	TIGHT JUNCTION FORMING PROTEIN CLAUDIN 10 (CLDN10)	118
4.4.1	NEF COLOCALISES WITH CLDN10 AT CELL-CELL CONTACTS	118
4.4.2	IS A BLOOD-BRAIN BARRIER ALTERATION A PUTATIVE RESULT OF NEFS BINDING TO CLDN10?	119
4.5	OXYGEN SENSOR PUTATIVE HIF-PROLYLHYDROXLAZE 4 (PH4)	121
4.5.1	NEF DOES NOT COLOCALISE WITH PH4 UNDER STANDARD CONDITIONS	121
4.6	NEURONAL MEMBRANE GLYCOPROTEIN M6B (GPM6B)	123
4.6.1	COLOCALISATION OF GPM6B WITH NEF COULD BE CONFIRMED IN COS-7 CELLS	123
4.6.2	NEF HAMPERS THE GPM6B-MEDIATED INDUCTION OF MEMBRANE EXTENSIONS IN COS-7	124
4.6.3	DOES GPM6B CHANGE FROM RECYCLING ENDOSOMES TO LATE ENDOSOMES OR LYSOSOMES IN PRESENCE OF NEF?	125
4.6.4	IS THERE A PHYSIOLOGICAL RELEVANCE FOR THE NEF-GPM6B INTERACTION?	126
4.7	OUTLOOK	128
5	SUMMARY	131
	ZUSAMMENFASSUNG	132
6	PUBLICATIONS	134
7	REFERENCES	135
8	APPENDIX	143
8.1	ABBREVIATIONS	143
8.2	LIST OF FIGURES	146
8.3	LIST OF TABLES	148
	ACKNOWLEDGEMENT	150
	DECLARATION OF WORK	152



Gesundheit / Health
Band / Volume 59
ISBN 978-3-89336-839-6

 **JÜLICH**
FORSCHUNGSZENTRUM